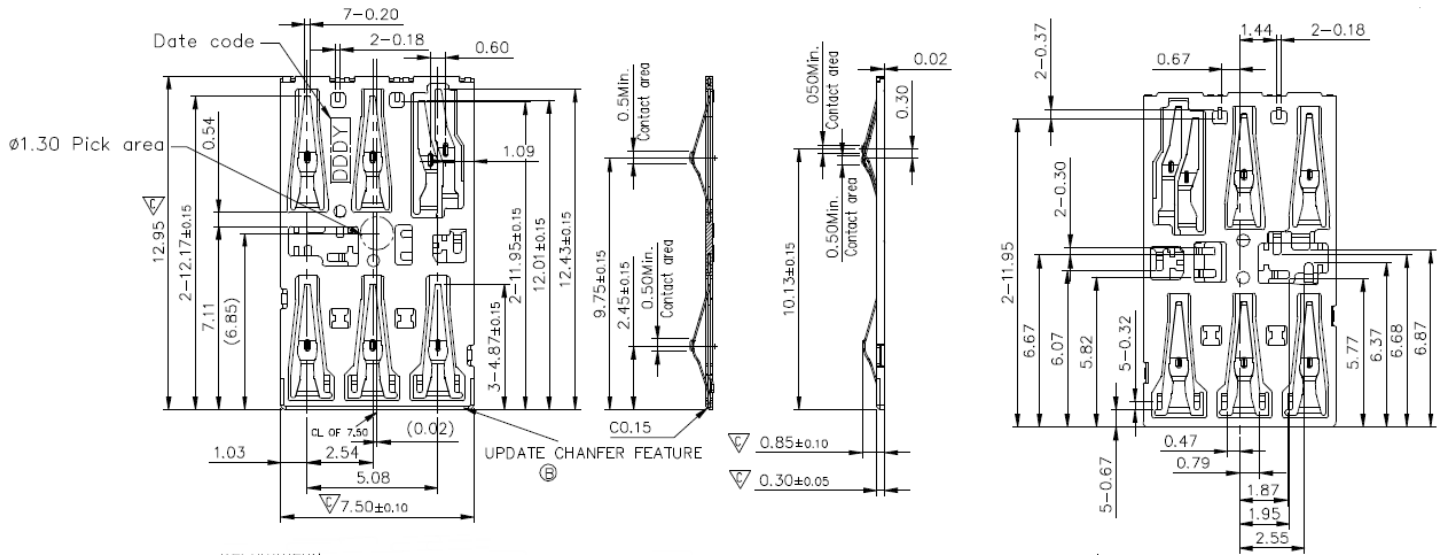
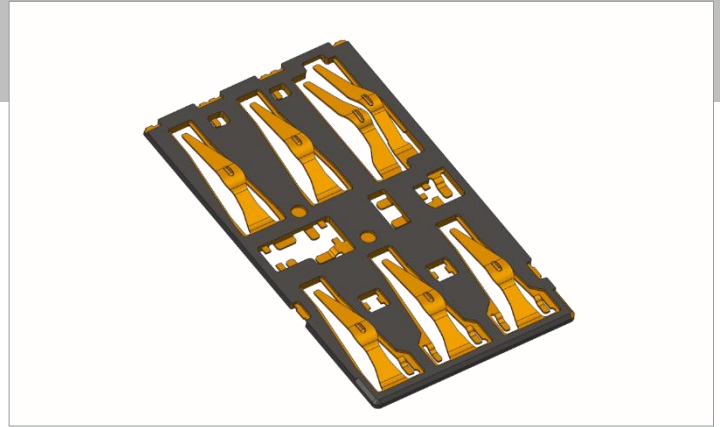


Card reader

PART #: SMB-Z0600-A00

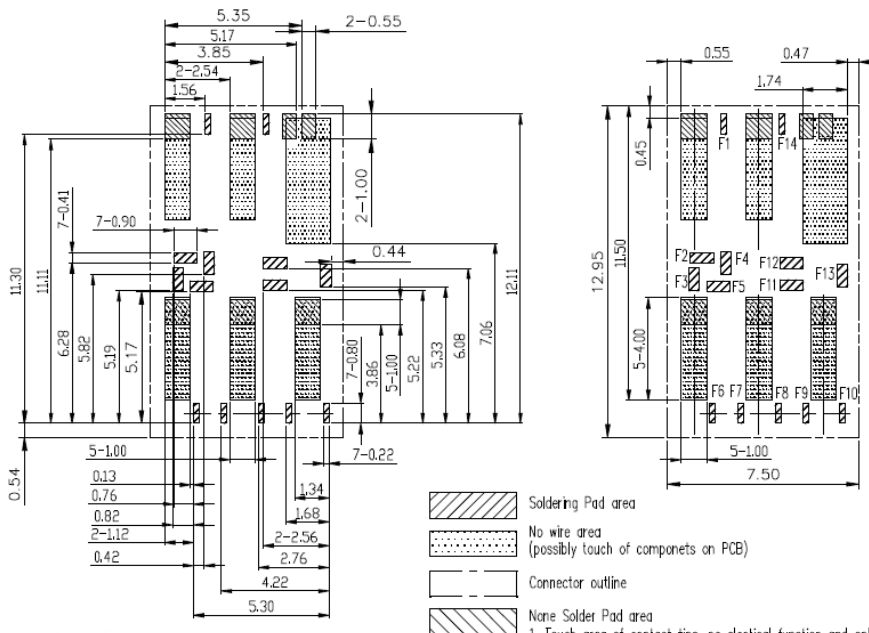
KEY FEATURES

- 12.95Lx7.50Wx0.85H mm
- Stable contact force
- Contact force : 0.20N min
- Contact with Anti-scratching mechanism
- With detect switch



Recommend FLEX Layout

Recommend tolerance: ±0.05
Recommend Stencil Thickness: 0.10



- Soldering Pad area
 - No wire area (possibly touch of components on PCB)
 - Connector outline
 - None Solder Pad area
1. Touch area of contact tips, no electrical function and only for mechanical function
 2. Don't brush Tin pasted on the area during SMT process.