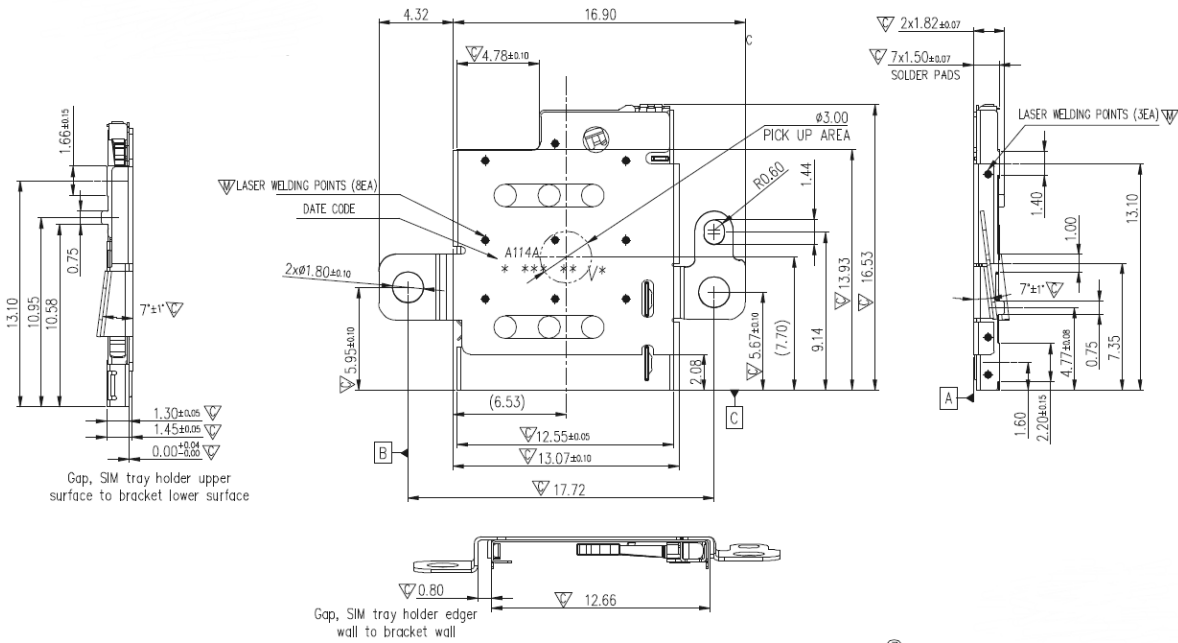
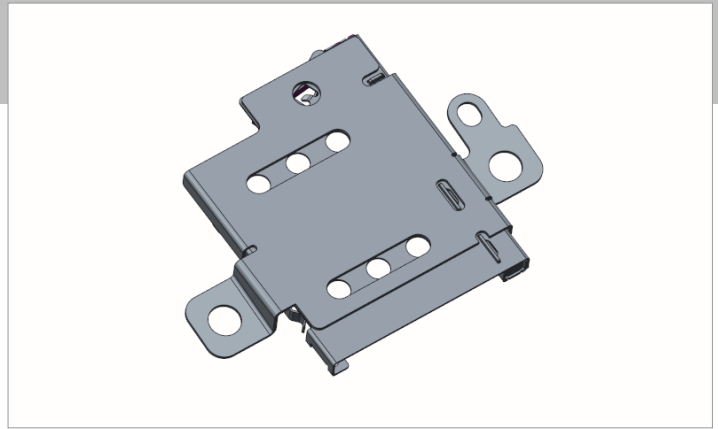


Card reader

PART #: SSM-A114A-A00

KEY FEATURES

- 16.53Lx21.22Wx1.45H mm
- Nano SIM pin push tray type
- Mechanical lifetime Min. 1000 mating cycles
- Wrongly insertion prevention
- With switch block



PCB-LAYOUT

RECOMMENDED PICK AND PLACE INSTRUCTION

SIM BLOCK AND CONNECTOR MUST BE USED TOGETHER

SIM BLOCK SHOWN SIMPLIFIED

NOTE: ONLY USED FOR PRODUCT RELEASE; FURTHER REQUIREMENTS SHALL BE DEFINED ACC. THE USED ASSEMBLY PROCESS

- Solder Areas
- NO pattern area on top layer and only further layers within 0.1mm of solder mask surface(PCB can be touched by moving components of the reader)

